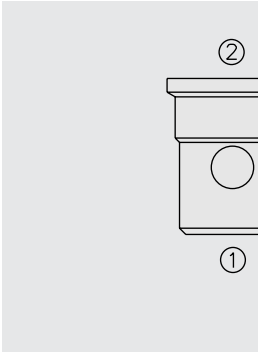


# CVD08 08-Size Check Valve Disc



## DESCRIPTION

A drop-in, cartridge-style check valve disc designed to conveniently integrate with a 5-way directional cartridge as a load sense check on port ①. The valve requires a modified cavity as indicated below.

## OPERATION

The CVD08 check valve disc allows free flow from port ② to port ①, while normally blocking flow in the opposite direction.

## FEATURES

- Hardened parts for long life.
- Heavy duty construction.
- Industry common cavity.

## RATINGS

**Operating Pressure:** 250 bar (3625 psi)

**Internal Leakage:** Maximum: 25 ml/minute (1.5 cu. in./minute) at 207 bar (3000 psi)

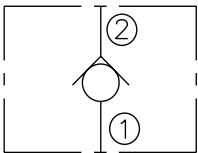
**Operating Temperature:** -40 to 120°C (-40° to 248°F)

**Materials:** Steel with hardened work surfaces

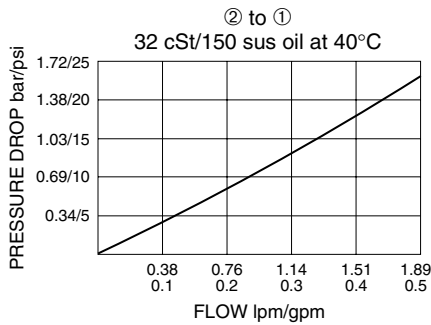
**Weight:** 0.01 kg. (0.02 lb.)

## SYMBOL

### USASI/ISO:



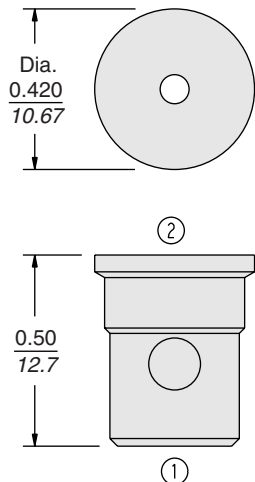
## PERFORMANCE (Disc Only)



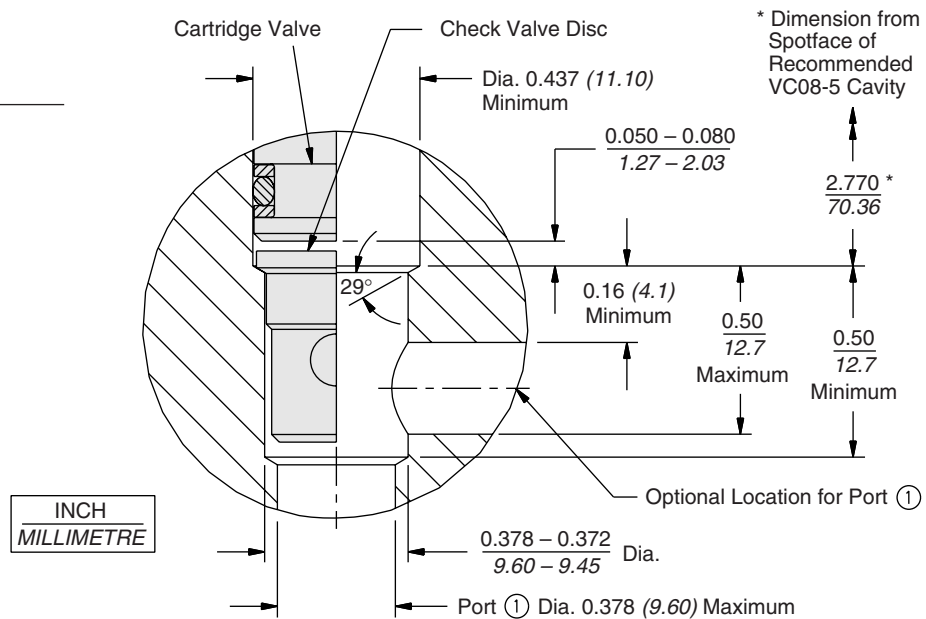
## TO ORDER

**Model No: CVD08**

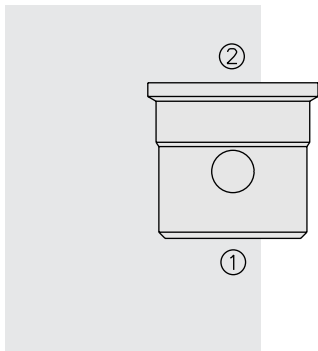
## DIMENSIONS



## INSTALLATION (See VC08-5 Cavity Detail, page 9.108.3)



# CVD10 10-Size Check Valve Disc



## DESCRIPTION

A drop-in, cartridge-style check valve disc designed to conveniently integrate with a 5-way directional cartridge as a load sense check on port ①. The valve requires a modified cavity as indicated below.

## OPERATION

The **CVD10** check valve disc allows free flow from port ② to port ①, while normally blocking flow in the opposite direction.

## FEATURES

- Hardened parts for long life.
- Heavy duty construction.
- Industry common cavity.

## RATINGS

**Operating Pressure:** 250 bar (3625 psi)

**Internal Leakage:** Maximum: 25 ml/minute (1.5 cu. in./minute) at 207 bar (3000 psi)

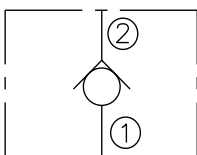
**Operating Temperature:** -40 to 120°C (-40° to 248°F)

**Materials:** Steel with hardened work surfaces

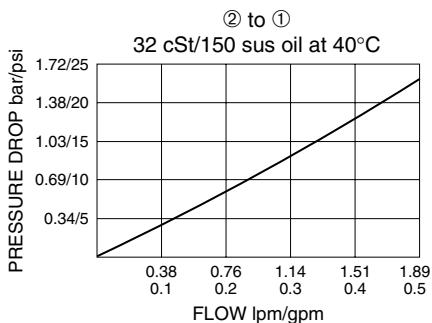
**Weight:** 0.01 kg. (0.02 lb.)

## SYMBOL

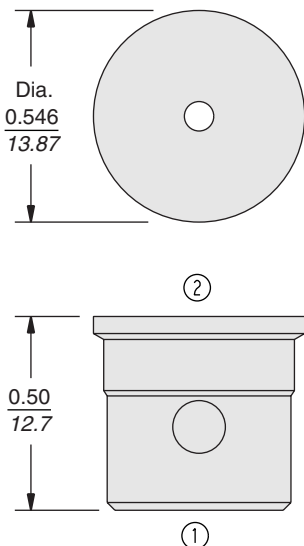
### USASI/ISO:



## PERFORMANCE (Disc Only)



## DIMENSIONS



## INSTALLATION (See VC10-5 Cavity Detail, page 9.110.6)

